



# 27TH AVENUE AND OLNEY AVENUE STORM DRAIN PROJECT

## PROJECT BACKGROUND

The Flood Control District (District) of Maricopa County completed the Laveen Area Drainage Master Study/Plan Update (ADMS/P Update) in December 2017. This update identified, compared and recommended alternative solutions to mitigate flooding hazards in the watershed. This project is one of the recommended solutions from to reduce the impacts of flooding for the area.

## STORM DRAIN PROJECT DESIGN

The project includes a storm drain system along 27th Ave from South Mountain Basin and along Olney Avenue. The storm drain system discharges directly to the existing regional basin at 27th Avenue and South Mountain Avenue constructed by the District in 2015-2016. This basin outfalls into an existing regional storm drain system located along Baseline Road which drains into the Salt River. The new storm drain will be designed to capture a 10-year storm frequency.

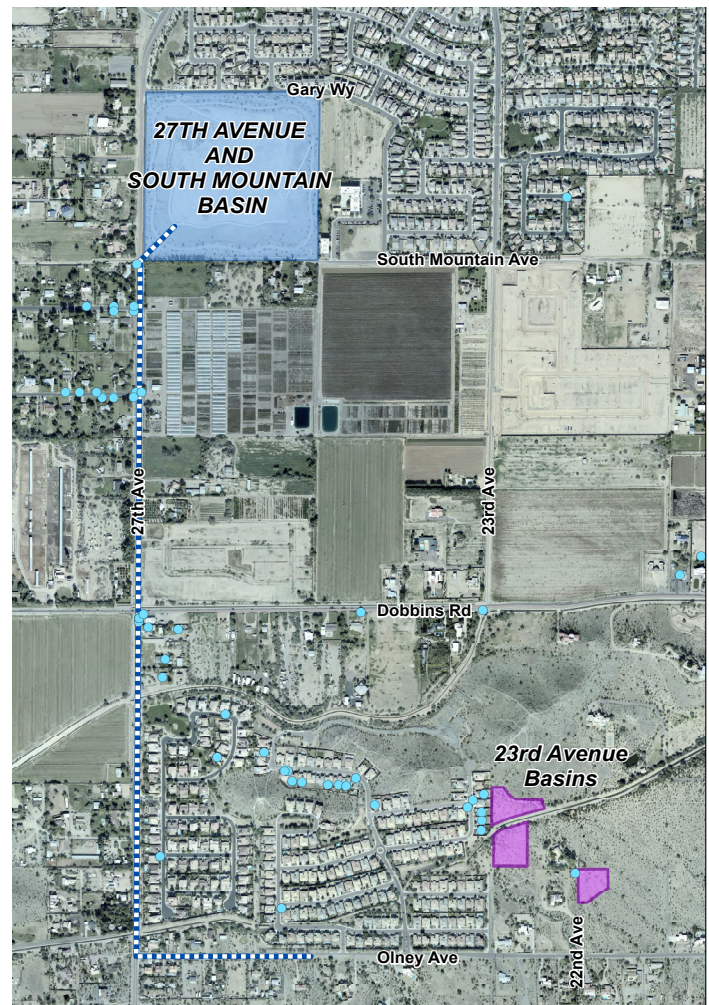
The three retention basins that were constructed in September 2019 near 23rd Ave and Western Canal do not have a storm drain outfall. The stormwater that collects in these three basins will be disposed of via evaporation and direct percolation.

The Laveen ADMS/P Update identified significant City of Phoenix water and sewer utilities located in both the 27th Ave and Olney Ave roadway corridors. The alignment and profile for the new storm drains in both 27th Ave and Olney Ave cross under the water and sewer profiles. It is likely there will be minor or temporary relocations of improvements like fire hydrants and water services with the new storm drain installation. All relocation of existing City of Phoenix water or sewer mains will be part of final design of the project.

The District and the City of Phoenix will continue to work with adjacent property owners and HOAs on the design.

## PROJECT SCHEDULE UPDATE

Project design is scheduled to be completed by May 2020. The 12-month construction project will begin once right of way acquisitions and utility relocation are complete.



### Contact:

Nazar Nabaty, P.E.  
Project Manager  
Nazar.Nabaty@Maricopa.gov  
602-506-4592

Flood Control District of Maricopa County  
2801 W. Durango Street  
Phoenix, AZ 85009



## 27TH AVENUE AND OLNEY AVENUE STORM DRAIN PROJECT

# YOU ARE INVITED

## PUBLIC INFORMATION MEETING

Join us for a public information meeting to review and offer comments on the design of the 27th Avenue and Olney Avenue Project. Find out the next steps for your community.

---

**Wednesday, March 11, 2020, 5:30 – 7:00pm**

Arizona Lutheran Academy  
6036 South 27th Avenue  
Phoenix, Arizona 85041

---

Accommodations will be made for individuals with disabilities and individuals with Limited English Proficiency (LEP). The District will also provide alternative format materials, translation services in other languages, including sign language and assertive listening devices. All of these accommodations are available upon 72 hours advance notice to the District at: 602-506-1501.



**City of Phoenix**